



# Scouts

**More Engaging Learning**

## Who we are

- **Gordon Weston**, Learning Project Lead



## What we're covering

- The new learning
- The Wood Badge
- Your learning records
- Next steps



# Why we're transforming volunteering



# Why we're transforming volunteering

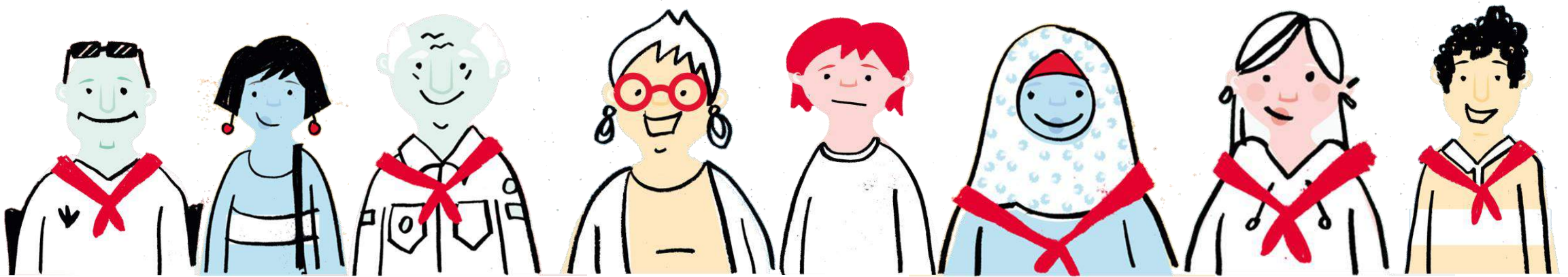
- Our Skills for Life strategy
- To provide more young people, and the ones we already have, with skills for life, we need more volunteers
- Every volunteer deserves to feel valued during their time with Scouts
- The world is changing, and volunteers want more flexibility in the time they give

**Ultimately.....**



**We want to make volunteering with  
Scouts easier and more fun...**

**...so that we can attract more volunteers  
and our current volunteers want to stay**



**Making volunteering easier and more fun is  
how we reach our North star...**



**More young  
people gaining  
skills for life**

**Consistently and safely  
deliver a great programme**

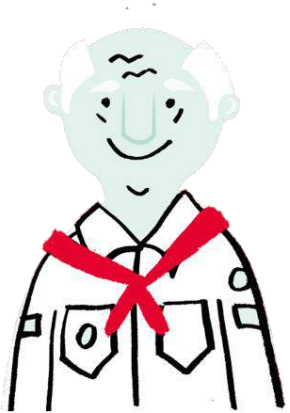
**Recruit more volunteers  
and retain current ones**

**Scouts** 

**What is changing?**



Listening to our volunteers, young people and the public we've identified three key areas for change:



**Providing a warmer welcome for everyone**

**Delivering a more engaging learning experience**



**Simplifying how we volunteer together**

All of which will be supported by easy-to-use digital tools



## Scouts.org.uk Website

Easy to use and mobile-friendly

Fewer steps and less administration

Digital first, but not digital only

Single Sign On

Specialist functionality

Continuous improvement over time

### Welcome Tool

- Improved attraction
- More transparency for new volunteers
- Automated and mobile-friendly references (Eng. & Wales)

### Membership Tool

- Reduced administration
- Increased self-service
- Easier and improved management of teams, permits, awards and more

### Learning Tool

- More accessible learning
- More engaging and enjoyable learning
- Easier reporting and management of learning

## Current training

- Externally our training is well regarded for its breadth and content
- Volunteers value the Wood Badge when they achieve it
- Internally difficult to navigate the training scheme
- Modules are not always specific to a role and are often duplicated when changing roles
- Volunteers are put off by having to repeat training or validation when moving role
- Reliance on having many dedicated volunteers to:
  - Update PLPs & Compass
  - Deliver & validate training
  - Manage training compliance



# What will 2025 and beyond look like?

- Volunteer focused – learning relevant for you!
- Easy to understand learning journey for all
- Additional optional learning designed to build and enhance a volunteer's skills
- A Wood Badge is about helping volunteers learn and develop as a person and leader
- One platform to access and record all learning
- Learning specific to a volunteer's role, without the need for duplication
- Reduced administration and improved learning management through automated processes







# Scouts

## More Engaging Learning

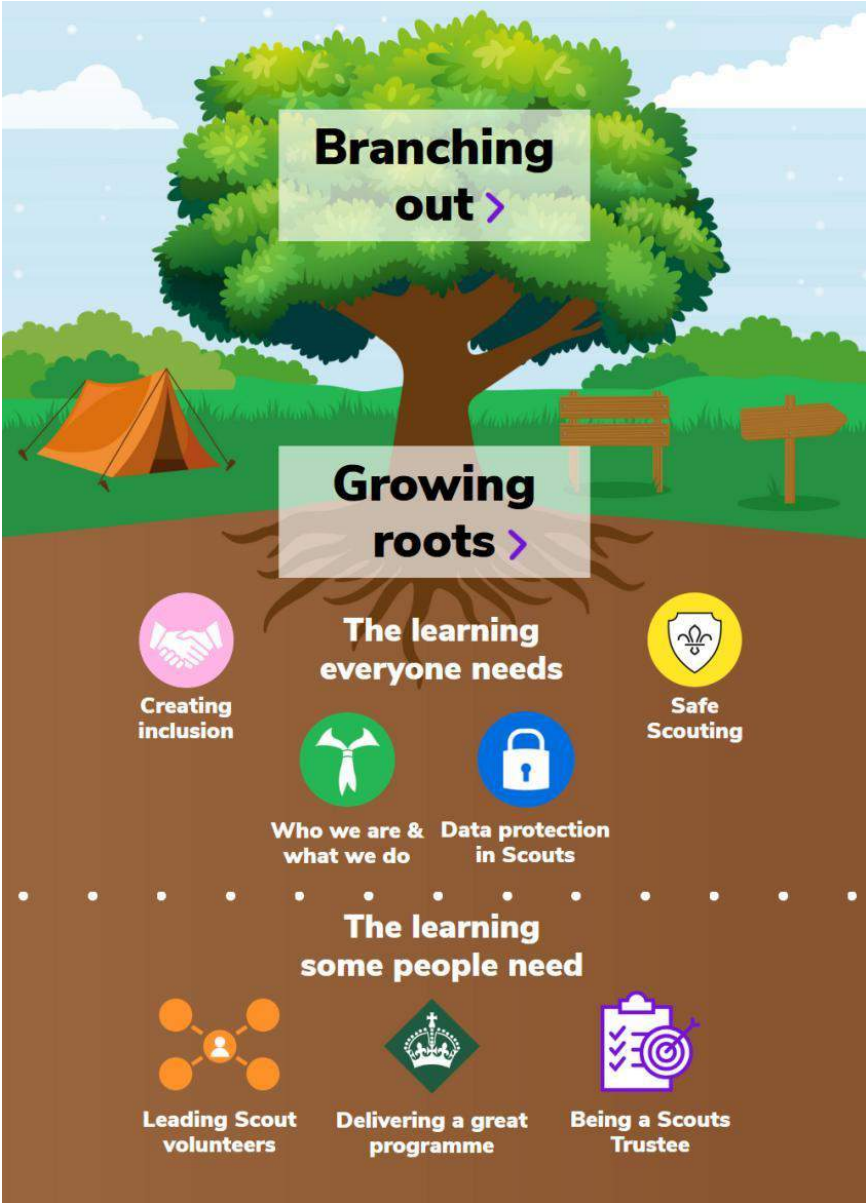
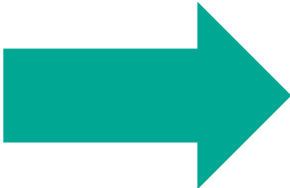
# Moving from training to learning

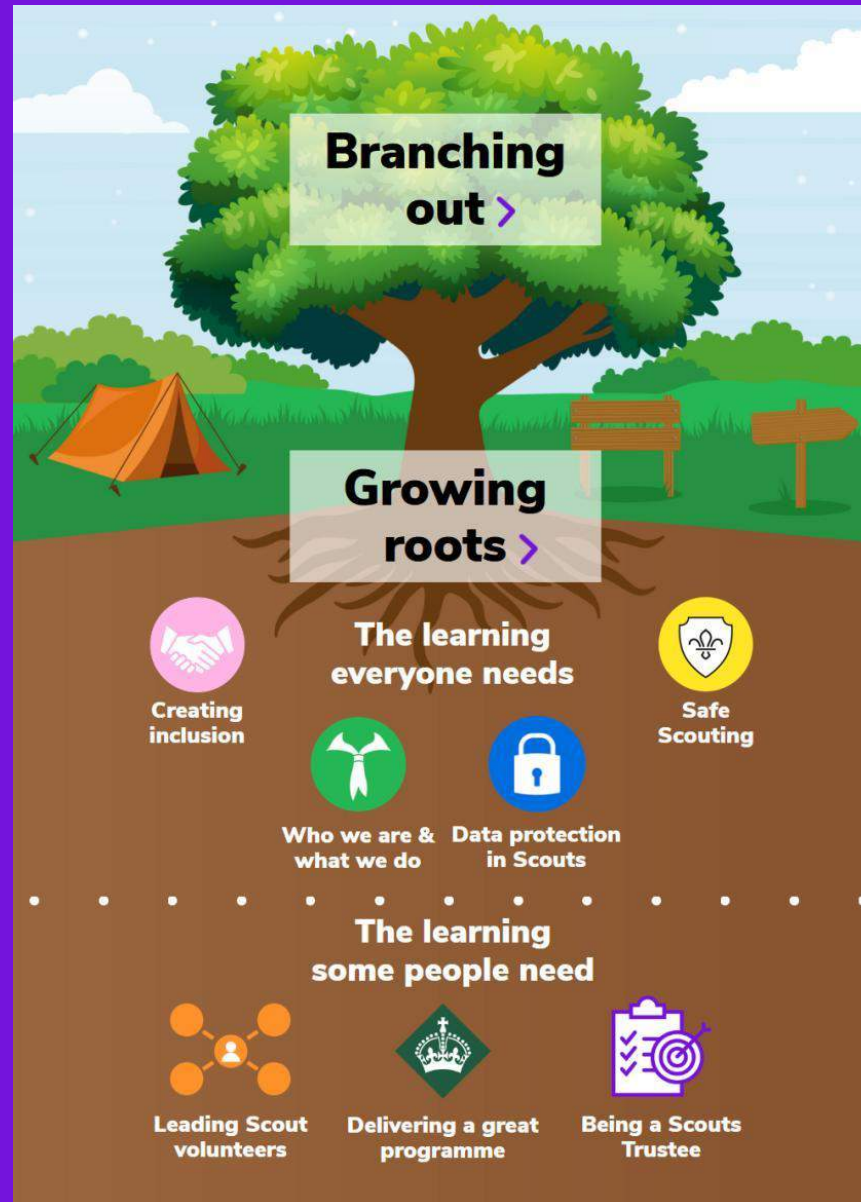
## Module Matrix

This is a summary of the Scouts' Adult Training Scheme and ongoing learning. For further information on the training requirements for specific roles, please refer to the Scouts' Adult Training Scheme pages on [scouts.org.uk/volunteers/learning-development-and-awards/](https://scouts.org.uk/volunteers/learning-development-and-awards/).

■ All Appointments ■ Section Leaders and Section Supporters ■ Trustee Introduction ■ Supplementary  
■ Managers, Section Supporters, Other Supporters ■ Mandatory Ongoing Learning

Module	Aim	Methods
<b>Getting Started</b> To be completed within 5 months of appointment		
Personal Learning Plan (02)	To create a plan for an individual's learning based on the requirements of the job and taking into account the individual's needs.	■ One to one ■ Workbook
Essential Information (01)	To provide all adults in Scouting with the essential information needed to get started in their role.	■ e-learning
General Data Protection Regulations (GDPR)	To provide all adults in Scouting with an understanding of what the General Data Protection Regulations (GDPR) means for them, their Scout Group, District and County and how to effectively align with it.	■ e-learning
Safety	To provide all adults in Scouting with an understanding of safety practice and responsibilities as a member of Scouts, to keep everyone safe.	■ e-learning
Safeguarding	To provide all adults in Scouting with an understanding of safeguarding practice and responsibilities as a member of Scouts, to keep everyone safe.	■ e-learning
Trustee Introduction	To provide the Charity or managing Trustees with information on their legal responsibilities and current regulations.	■ e-learning
Tools for the Role (Section Leaders) (03)	To provide the basic information on the individual's role or area of responsibility and some practical help to get the individual started in the role.	■ Course ■ One to one ■ Small group ■ e-learning
Tools for the Role (Managers and Supporters) (04)	To provide key information about the individual's role, areas of responsibility and where they can find further information and support.	■ Course ■ One to one ■ Small group ■ e-learning







# Growing roots >

**The learning everyone needs**



**Creating inclusion**



**Safe Scouting**



**Who we are & what we do**



**Data protection in Scouts**



## Growing roots >



### Creating Inclusion

- Challenging assumptions
- Practical ways to be more inclusive
- Making reasonable adjustments
- Challenging discrimination

## Growing roots >



**Creating  
inclusion**

## Who We Are & What We Do



- Our purpose, promise, and values
- How we have an impact on young people and communities
- How our different teams work together
- The support available to you

## Growing roots >

# Data Protection In Scouts

- What personal data is
- How to gather data
- How to use, share, store, delete and archive data
- Dealing with data breaches and subject access requests



**Safe  
Scouting**



## Growing roots >

# Safe Scouting

- Why this is important
- Assessing and managing risks and incidents
- Protecting young people and adults
- Recognising and reporting safeguarding concerns





# The learning some people need

Scouts 



**Leading Scout  
volunteers**



**Delivering a great  
programme**



**Being a Scouts  
Trustee**



Growing

# The Learning Tree





## The learning you need to do



### Safe Scouting

How we keep each other and our young people safe.  
10 May 2023 16:06 to 10 Aug 2023 16:06

English (GB) ⓘ Required 🚩 In progress...



### Creating Inclusion

How we make Scouts a welcoming place for everyone.  
10 May 2023 16:06 to 10 Aug 2023 16:06

English (GB) ⓘ Required 🚩 In progress...



### Who we are & What we do

An introduction to what Scouts is and how we deliver skills fo...  
10 May 2023 16:07 to 10 Aug 2023 16:07

English (GB) ⓘ Required 🚩 In progress...



### Data Protection in Scouts

How we take care of people's personal data.  
10 May 2023 16:06 to 10 Aug 2023 16:06

English (GB) ⓘ Required 🚩 In progress...

Simple to use.

Accessibility  
built in.



# Example Learning Content

## What is a data breach?

On the next page we're going to take a look at some examples of situations that might be data breaches, or might not. You can choose from one of three options:

- A data breach has happened
- A data breach might have happened
- A data breach hasn't happened

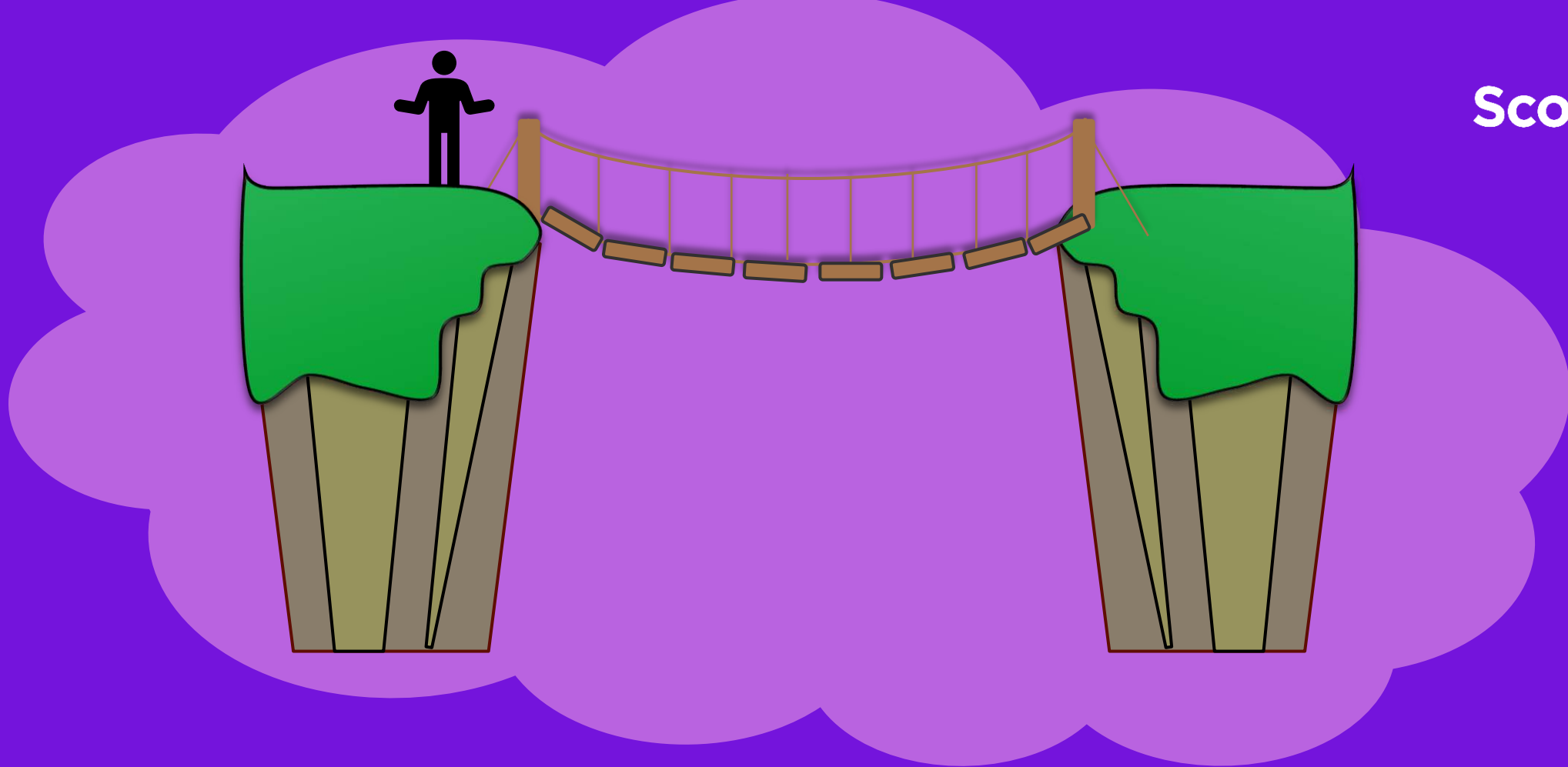
After these questions, we'll cover some ways you can reduce the risk of a data breach happening, and how to minimise the harm caused by them.



Select to Start



Previous page

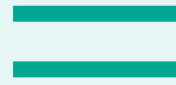


**But how are we going to get from here to there?**

# Learning Data Migration



'Getting Started'  
modules validated



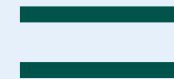
Relevant 'Growing  
Roots' complete



Some 'Getting Started'  
modules validated



Complete some of the  
new 'Growing Roots'



Relevant 'Growing  
Roots' complete

All completed Wood Badges and validated training modules will also be migrated

# Branching Out

2023

## Module Matrix

This is a summary of the Scouts' Adult Training Scheme and ongoing learning. For further information on the training requirements for specific roles, please refer to the Scouts' Adult Training Scheme pages on [scouts.org.uk/volunteers/learning-development-and-awards/](https://scouts.org.uk/volunteers/learning-development-and-awards/).

■ All Appointments ■ Section Leaders and Section Supporters ■ Trustee Introduction ■ Supplementary ■ Managers, Section Supporters, Other Supporters ■ Mandatory Ongoing Learning

Getting Started To be completed within 5 months of appointment		
Module	Aim	Methods
Personal Learning Plan (02)	To create a plan for an individual's learning based on the requirements of the job and taking into account the individual's needs.	■ One to one ■ Workbook
Essential Information (01)	To provide all adults in Scouting with the essential information needed to get started in their role.	■ e-learning
General Data Protection Regulations (GDPR)	To provide all adults in Scouting with an understanding of what the General Data Protection Regulations (GDPR) means for them, their Scout Group, District and County and how to effectively align with it.	■ e-learning
Safety	To provide all adults in Scouting with an understanding of safety practice and responsibilities as a member of Scouts, to keep everyone safe.	■ e-learning
Safeguarding	To provide all adults in Scouting with an understanding of safeguarding practice and responsibilities as a member of Scouts, to keep everyone safe.	■ e-learning
Trustee Introduction	To provide the Charity or managing Trustees with information on their legal responsibilities and current regulations.	■ e-learning
Tools for the Role (Section Leaders) (03)	To provide the basic information on the individual's role or area of responsibility and some practical help to get the individual started in the role.	■ Course ■ One to one ■ Small group ■ e-learning
Tools for the Role (Managers and Supporters) (04)	To provide key information about the individual's role, areas of responsibility and where they can find further information and support.	■ Course ■ One to one ■ Small group ■ e-learning



2024



## Module Matrix

This is a summary of the Scouts' Adult Training Scheme and ongoing learning. For further information on the training requirements for specific roles, please refer to the Scouts' Adult Training Scheme pages on [scouts.org.uk/volunteers/learning-development-and-awards/](https://scouts.org.uk/volunteers/learning-development-and-awards/).

■ All Appointments ■ Section Leaders and Section Supporters ■ Trustee Introduction ■ Supplementary ■ Managers, Section Supporters, Other Supporters ■ Mandatory Ongoing Learning

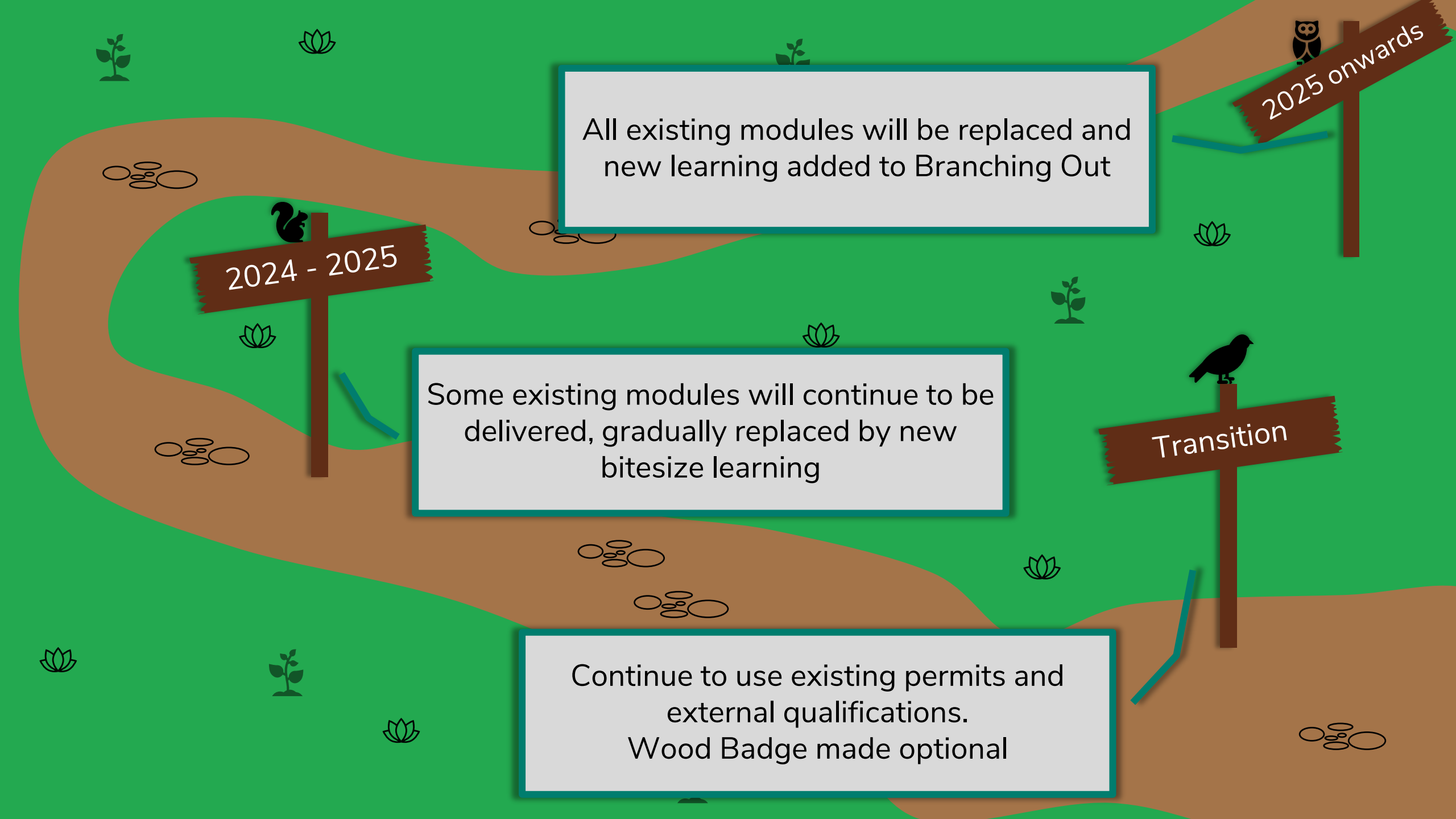
Getting Started To be completed within 5 months of appointment		
Module	Aim	Methods
Personal Learning Plan (02)	To create a plan for an individual's learning based on the requirements of the job and taking into account the individual's needs.	■ One to one ■ Workbook
Essential Information (01)	To provide all adults in Scouting with the essential information needed to get started in their role.	■ e-learning
General Data Protection Regulations (GDPR)	To provide all adults in Scouting with an understanding of what the General Data Protection Regulations (GDPR) means for them, their Scout Group, District and County and how to effectively align with it.	■ e-learning
Safety	To provide all adults in Scouting with an understanding of safety practice and responsibilities as a member of Scouts, to keep everyone safe.	■ e-learning
Safeguarding	To provide all adults in Scouting with an understanding of safeguarding practice and responsibilities as a member of Scouts, to keep everyone safe.	■ e-learning
Trustee Introduction	To provide the Charity or managing Trustees with information on their legal responsibilities and current regulations.	■ e-learning
Tools for the Role (Section Leaders) (03)	To provide the basic information on the individual's role or area of responsibility and some practical help to get the individual started in the role.	■ Course ■ One to one ■ Small group ■ e-learning
Tools for the Role (Managers and Supporters) (04)	To provide key information about the individual's role, areas of responsibility and where they can find further information and support.	■ Course ■ One to one ■ Small group ■ e-learning



2025







2024 - 2025

All existing modules will be replaced and new learning added to Branching Out

2025 onwards

Some existing modules will continue to be delivered, gradually replaced by new bitesize learning

Transition

Continue to use existing permits and external qualifications.  
Wood Badge made optional

# Accessible



Digital first (not digital only)



Face-to-face learning where appropriate



We will make learning available non-digitally for those who need it

## Recommended Learning

- All members who have 'Growing Roots' signed off as part of the transition are recommended to complete the below new learning, though this is not compulsory
- Creating Inclusion
- Any role/team specific learning(once available)





## Consider...

### For everyone:

- Engage with Districts
- District Volunteer development Teams
- TAs
- Potential opportunities for those with appropriate skills
- There will be face to face training in the future
- First Aid Training
- Consider what training will be required



# First Aid - Principles

As part of the move to the team-based approach, a review of who requires First Aid was undertaken and the following principles agreed:

- Every young person should have direct access to first aid treatment when on Scout activities
- Parents and carers should be confident that every adult leader, who is regularly and directly involved with their child's Scouting, has completed, or is working towards completing, first aid training
- No young person should ever miss out on a Scouts activity due to a lack of qualified adult first aid cover
- Having a body of first aid trained volunteers has a positive impact on our communities

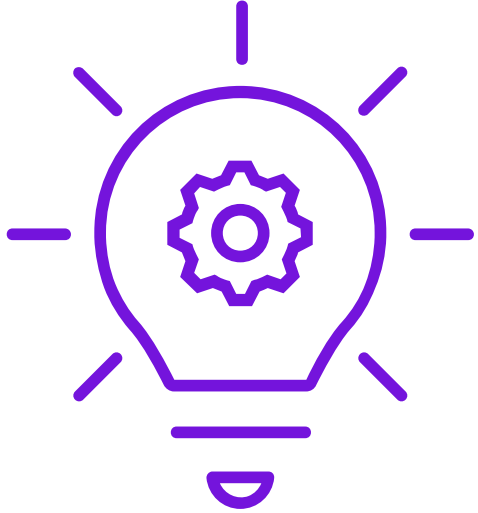




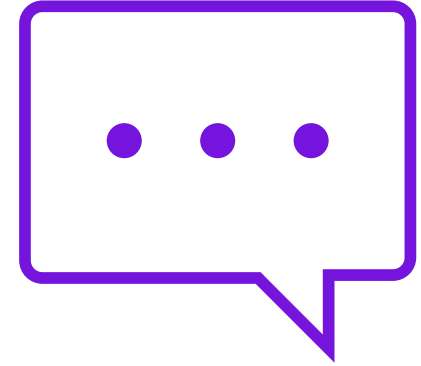
## First Aid

- First Aid is required for roles which:
  - Work directly with young people on a regular basis; or
  - Might reasonably be required to step in and work directly with young people
- This includes the following roles:
  - All Section Team Leaders & Members (Squirrels, Beavers, Cubs, Scouts, Explorers)
  - Group Lead Volunteers
  - 14-24 Team Leaders
- This also means several leadership roles will no longer be required to have first aid





# Questions



# Join our Volunteer Experience Group

Test our new membership system  
Feed back on our new learning experience  
Get a sneak peek of new welcome resources

Help us  
improve  
volunteering



Register to join

[bit.ly/volunteer-experience-group](https://bit.ly/volunteer-experience-group)

